

Opening a drawing through Windows explorer creates %RoamableRootFolder% folder within drawing folder in AutoCAD

Products and versions covered ▲

AutoCAD 2019, AutoCAD Architecture 2019, AutoCAD Electrical 2019, AutoCAD LT 2019, AutoCAD MEP 2019, AutoCAD Map 3D 2019, AutoCAD Mechanical 2019, AutoCAD Plant 3D 2019, & Civil 3D 2019

By:  **AUTODESK**. Support
Apr 04 2019

<https://autode.sk/2XTzy4i>

SHARE ↵ ADD TO COLLECTION ➕

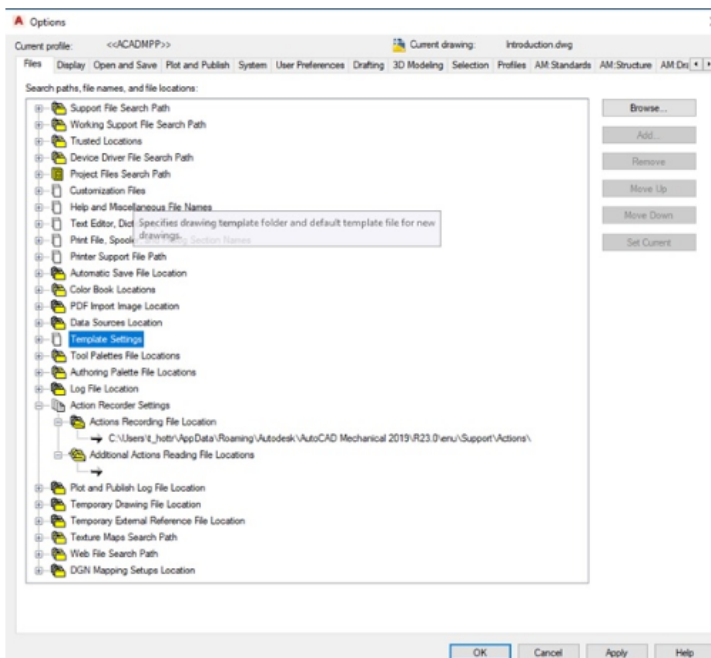
Issue:

When you start AutoCAD 2019 by double clicking on a DWG or DXF file, a folder called %RoamableRootFolder% is created in the folder where the DWG or DXF file resides.

The folder contains folder support and support\actions. Both folders are empty.

Solution:

- Open options and go to *Files* tab.
- Open *Action Recorder Settings* and there *Actions Recording File Location*.
- Double-click on %RoamableRootFolder%\support\actions and browse to (choose) *C:\Users\<user name>\AppData\Roaming\Autodesk\AutoCAD Mechanical 2019\R23.0\<language>\Support\Actions*



- Click on *Apply* and then on *OK*.